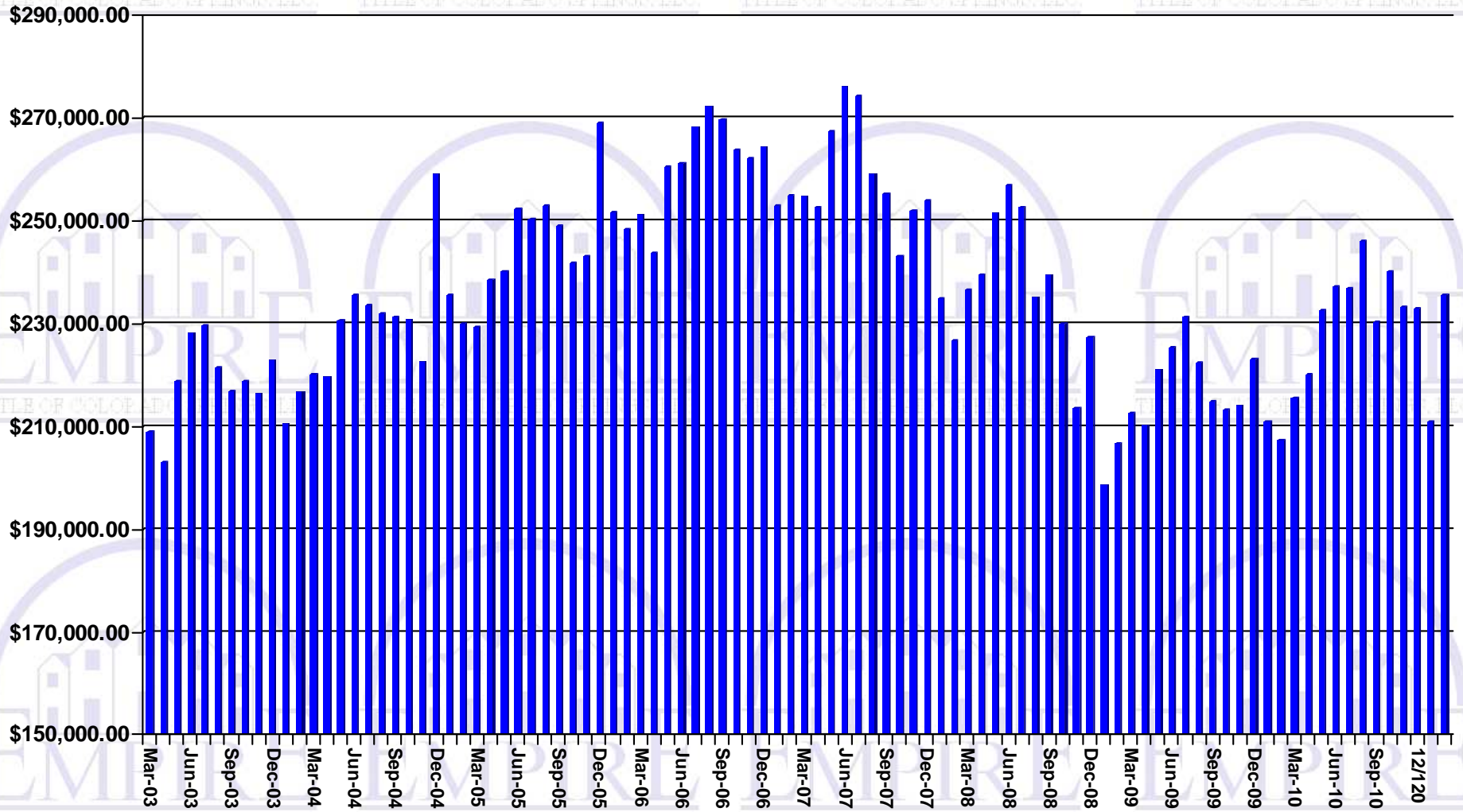
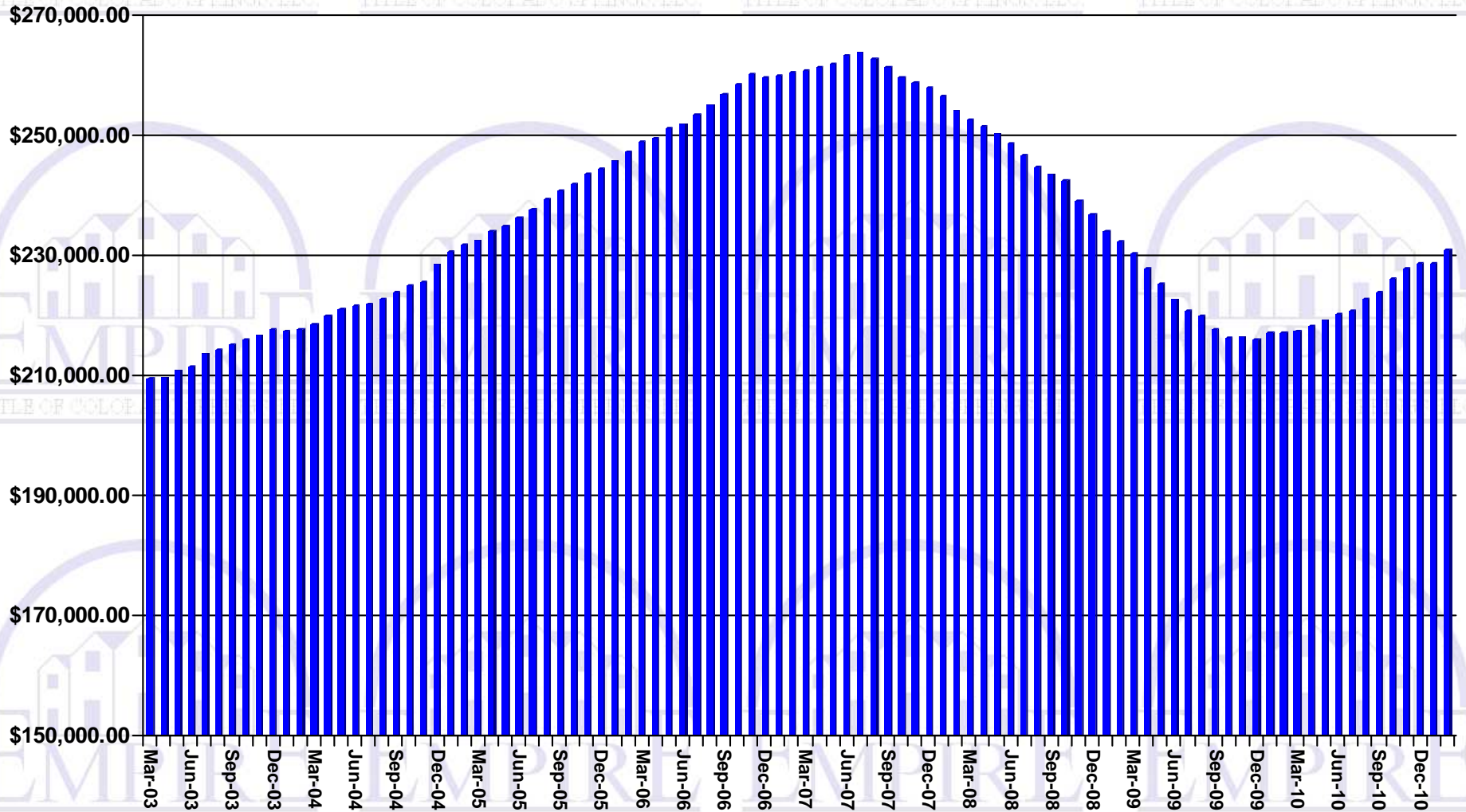


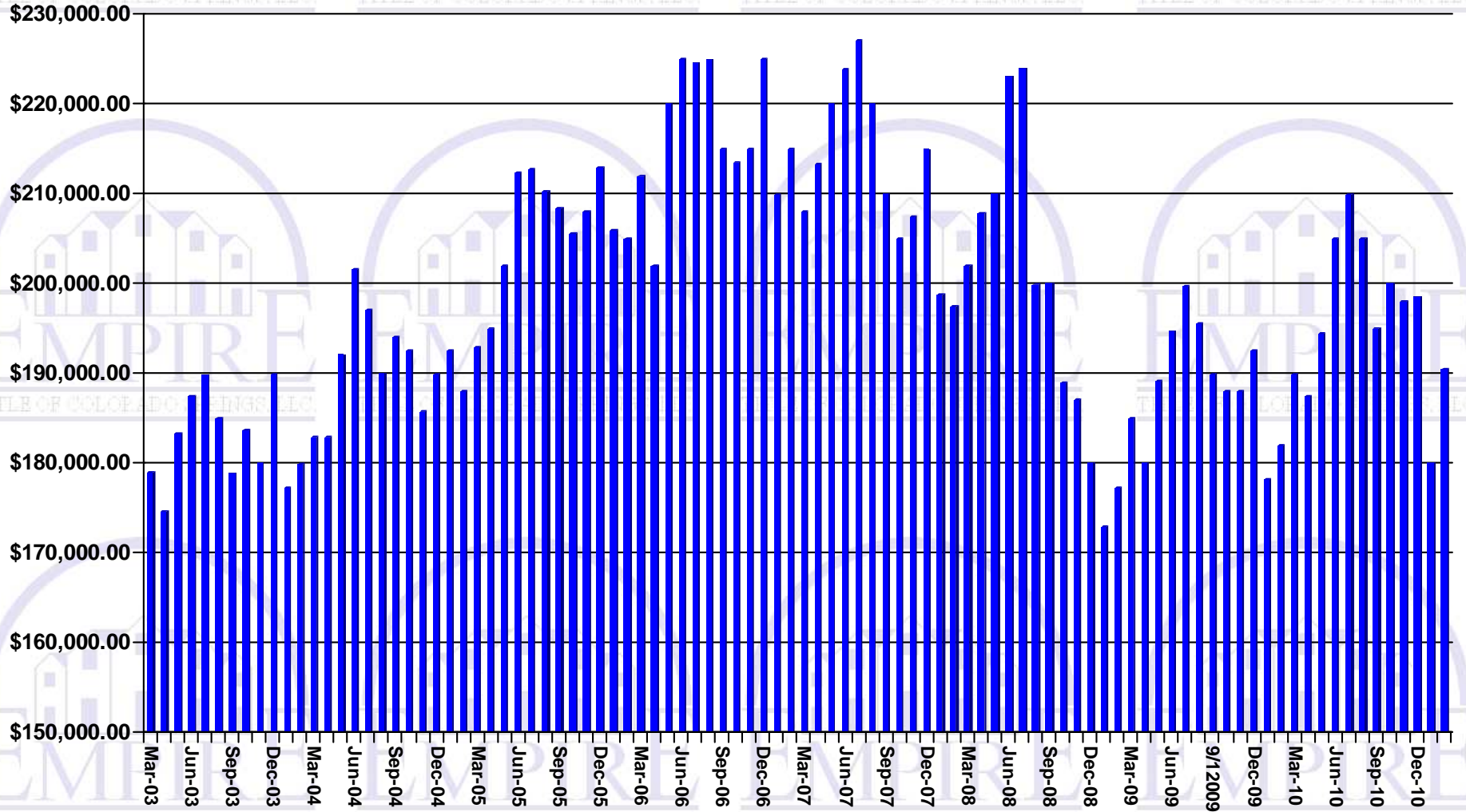
Average Sales Price



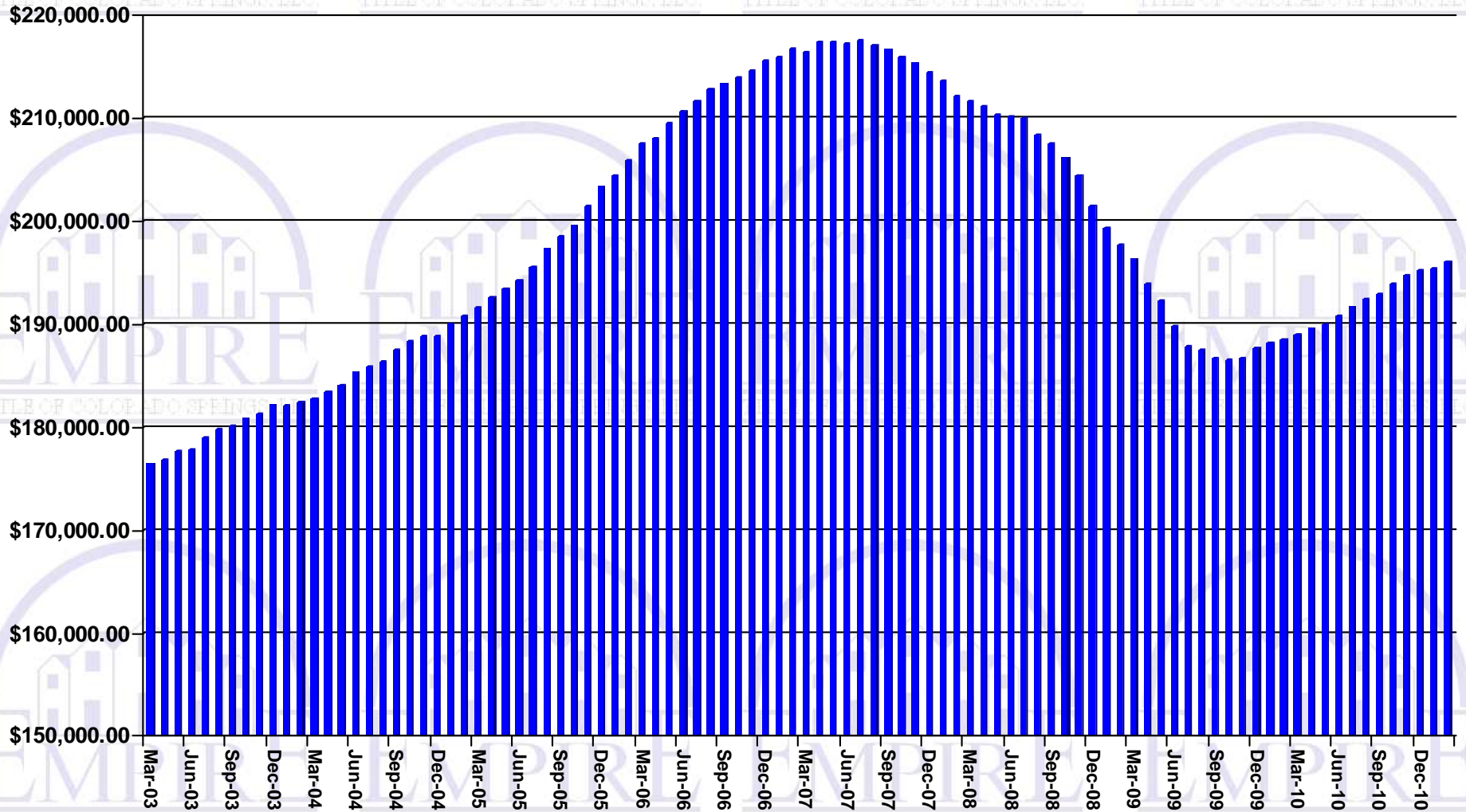
Sales Price Previous 12 Month Average



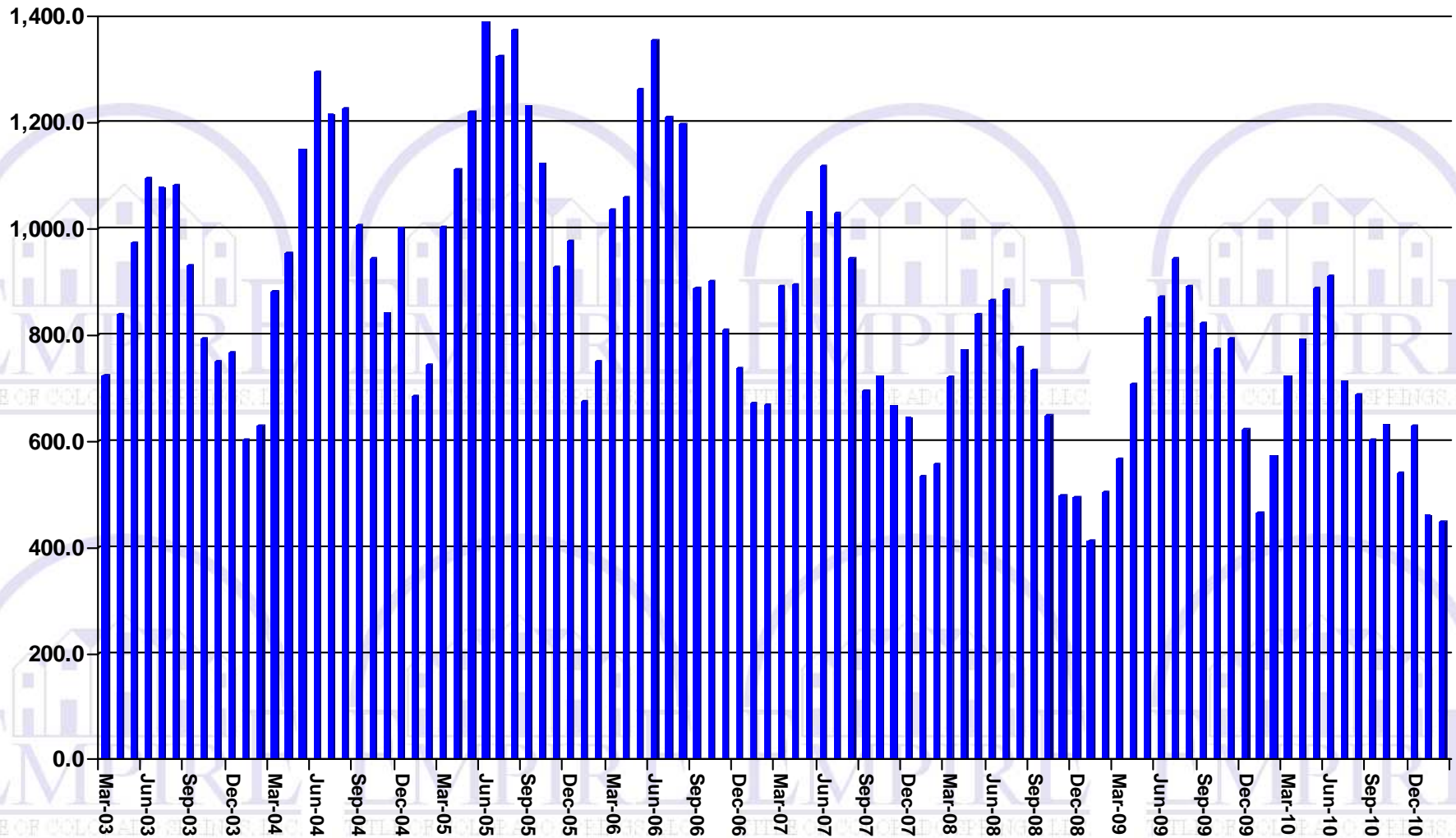
Median Sales Price



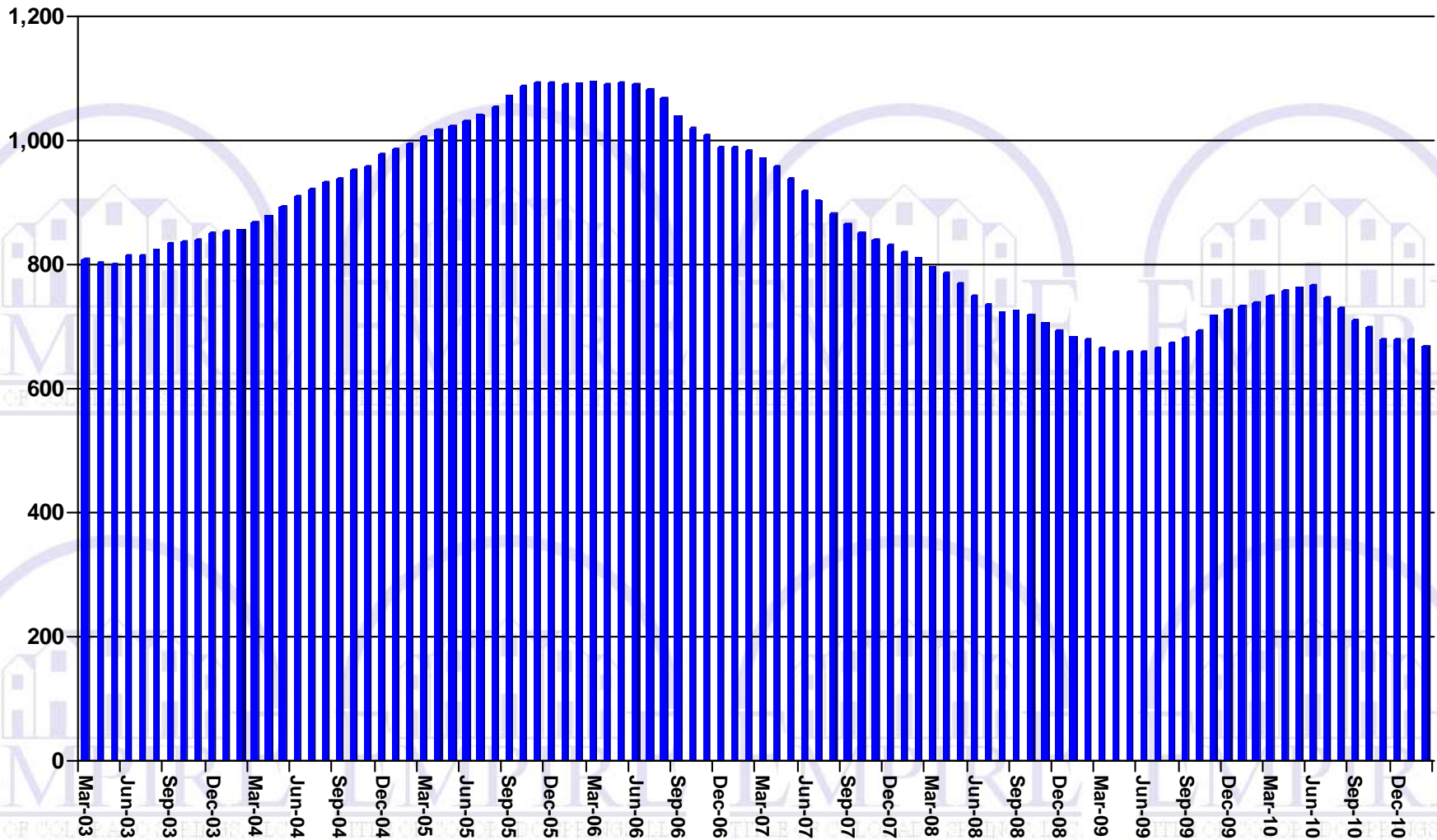
Sales Price Previous 12 Month Median



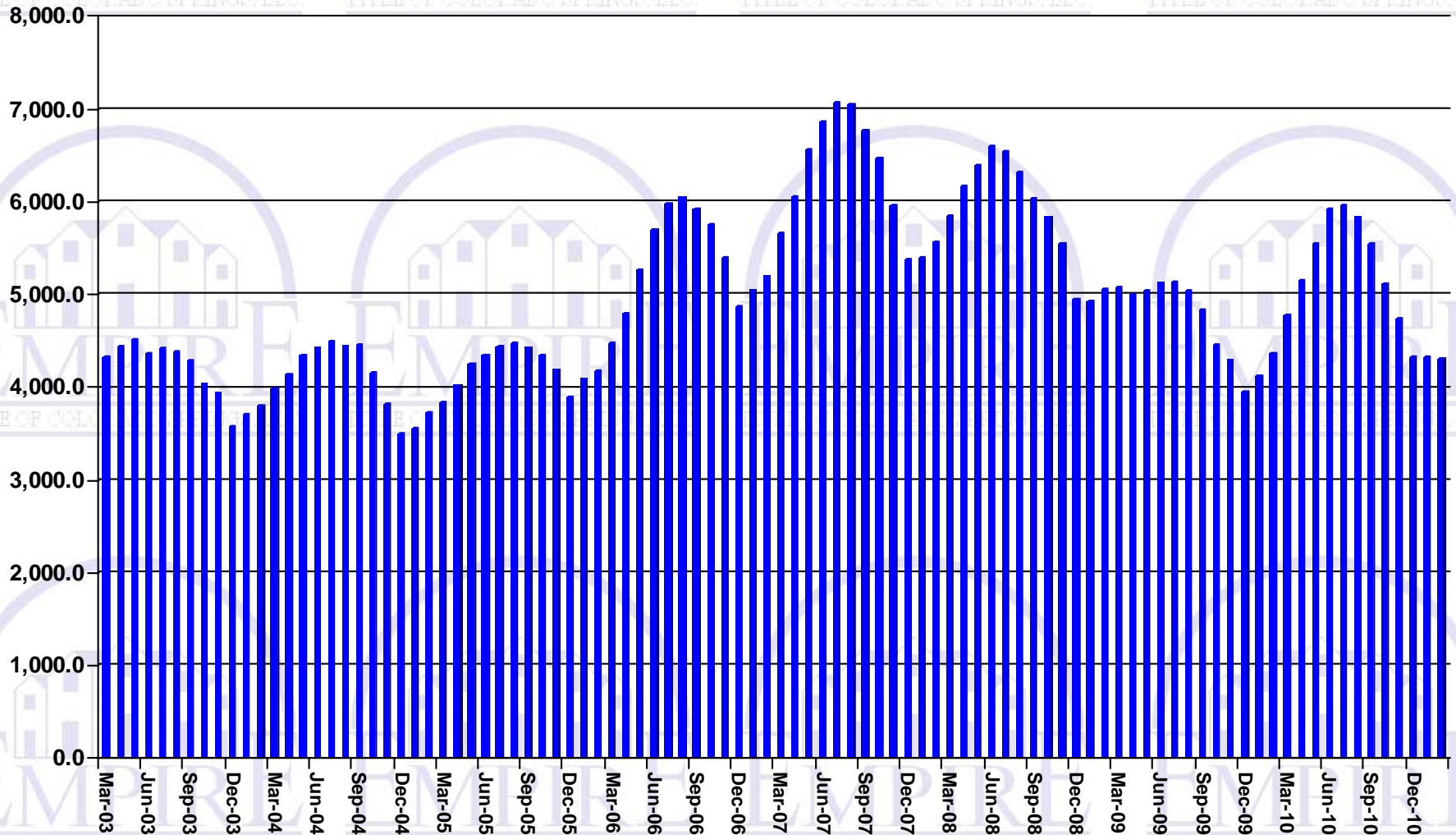
Number of Sales Per Month



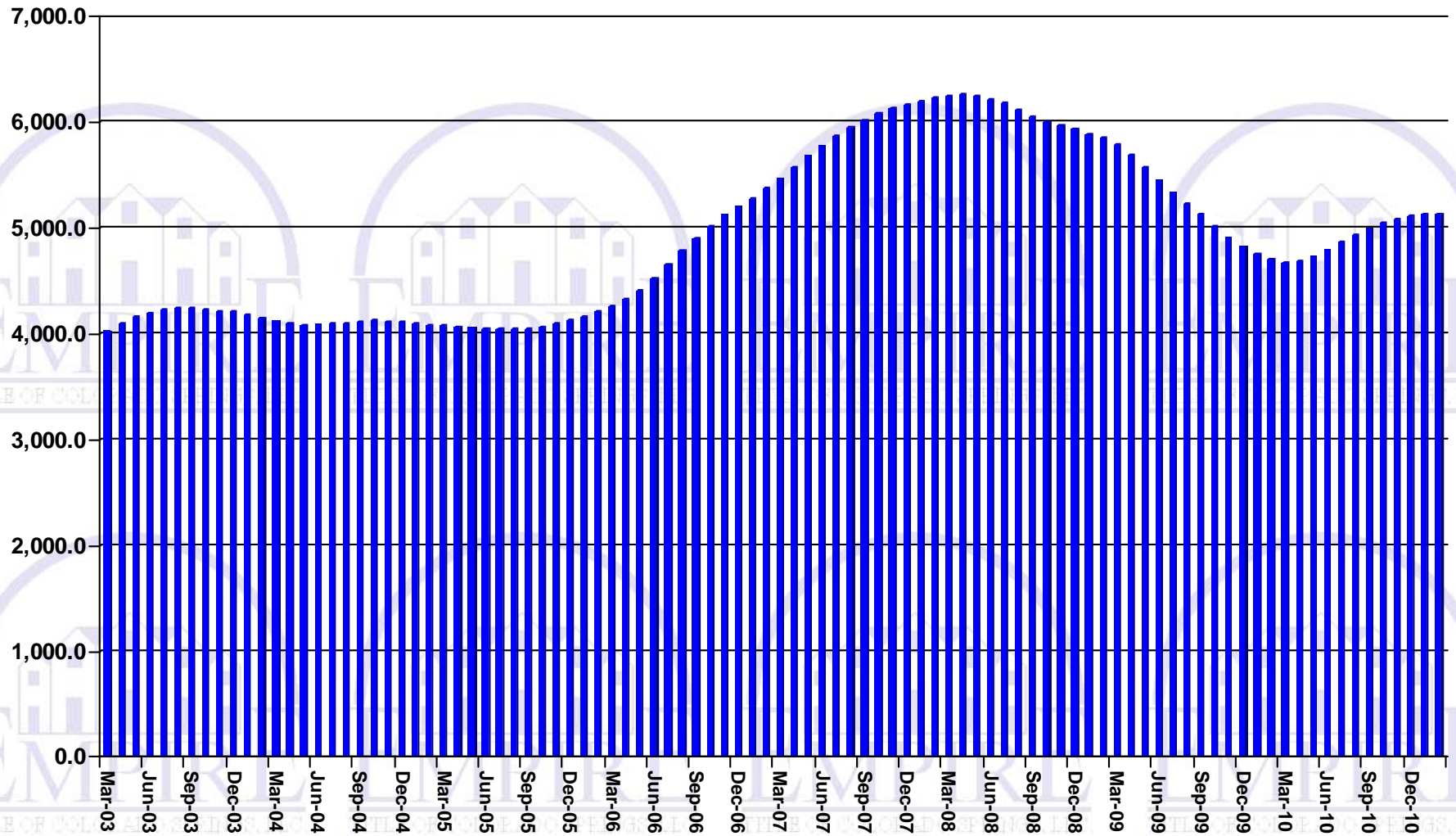
Number of Sales Previous 12 Month Average



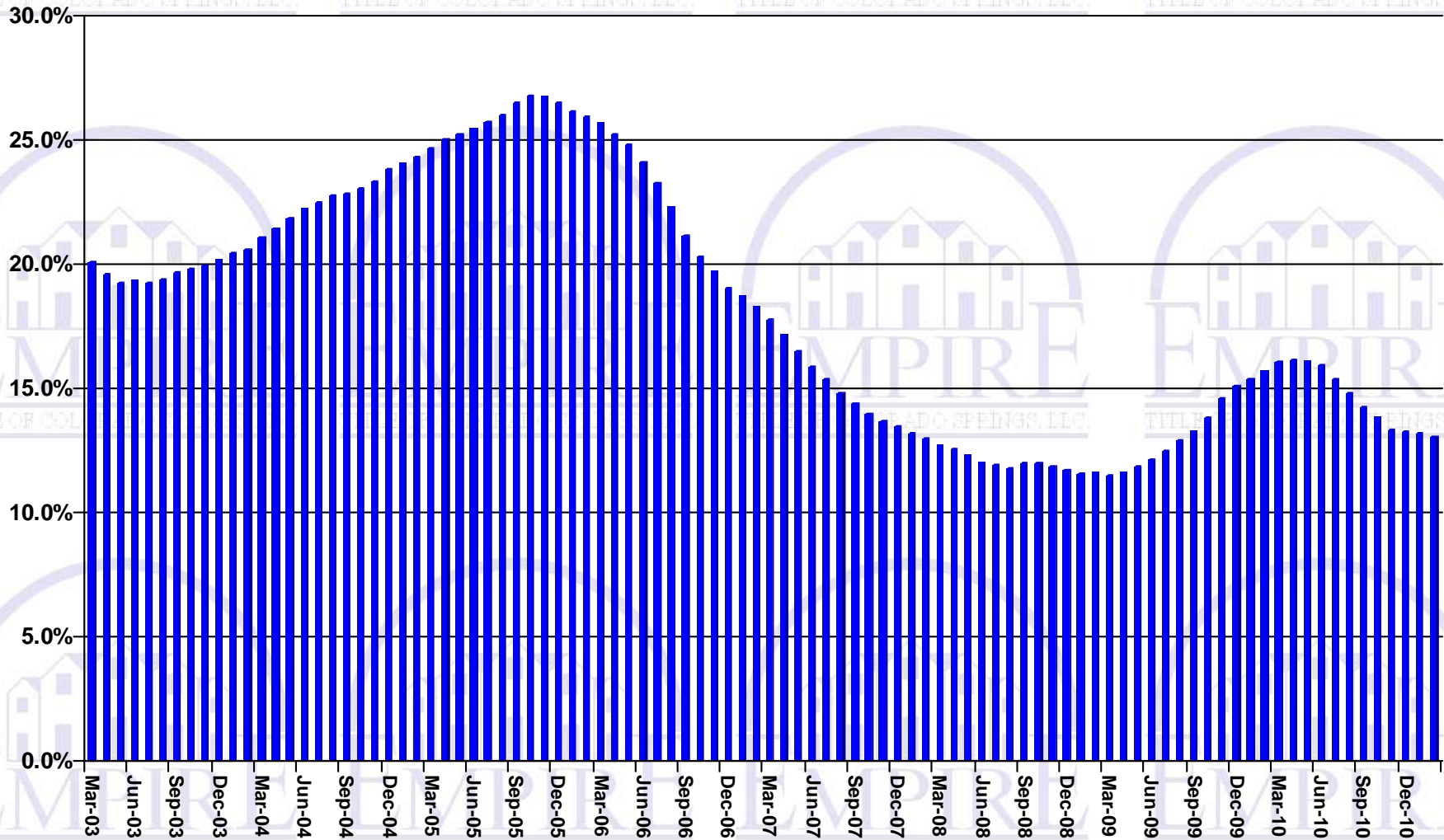
Active Listings



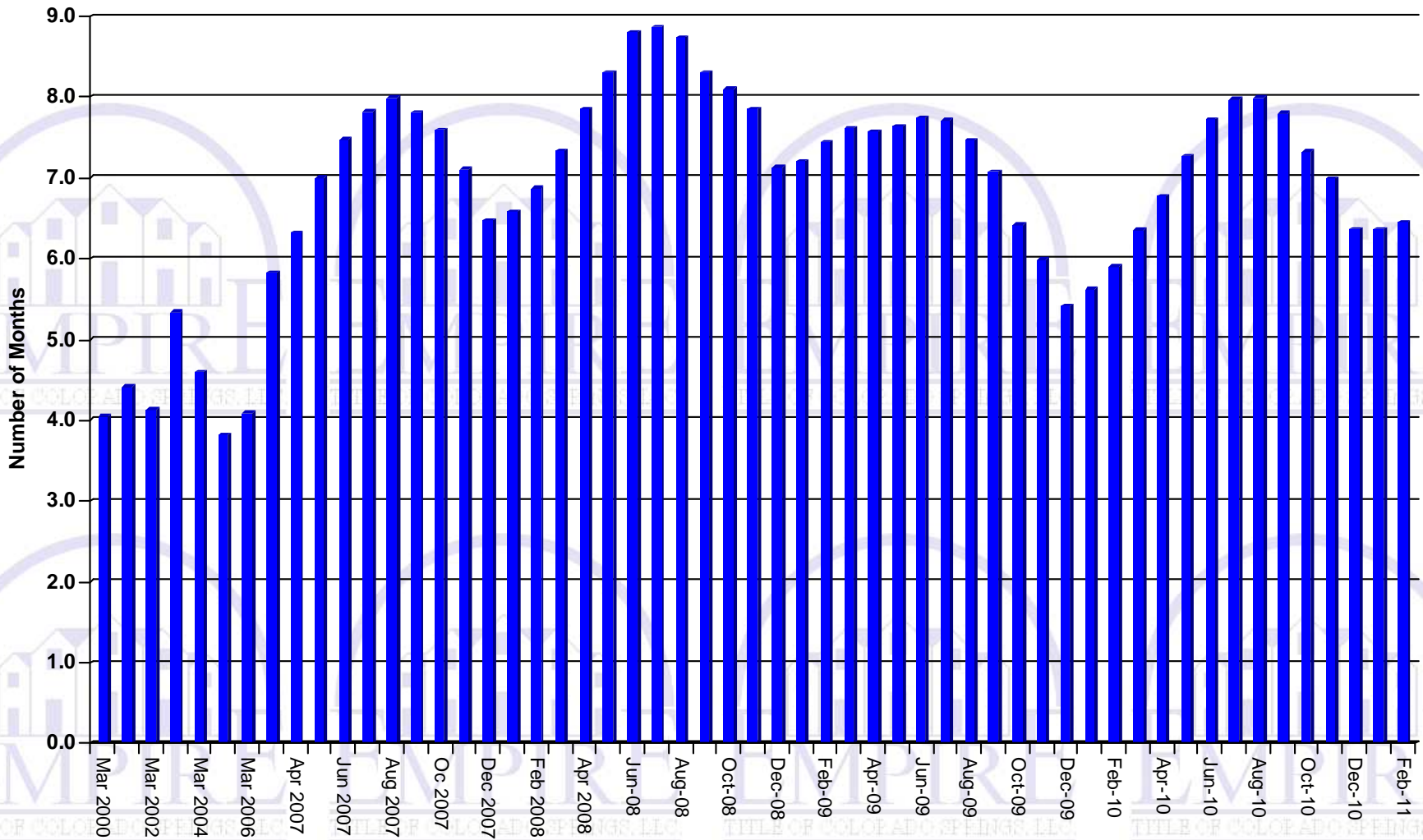
Active Listings Previous 12 Months Average



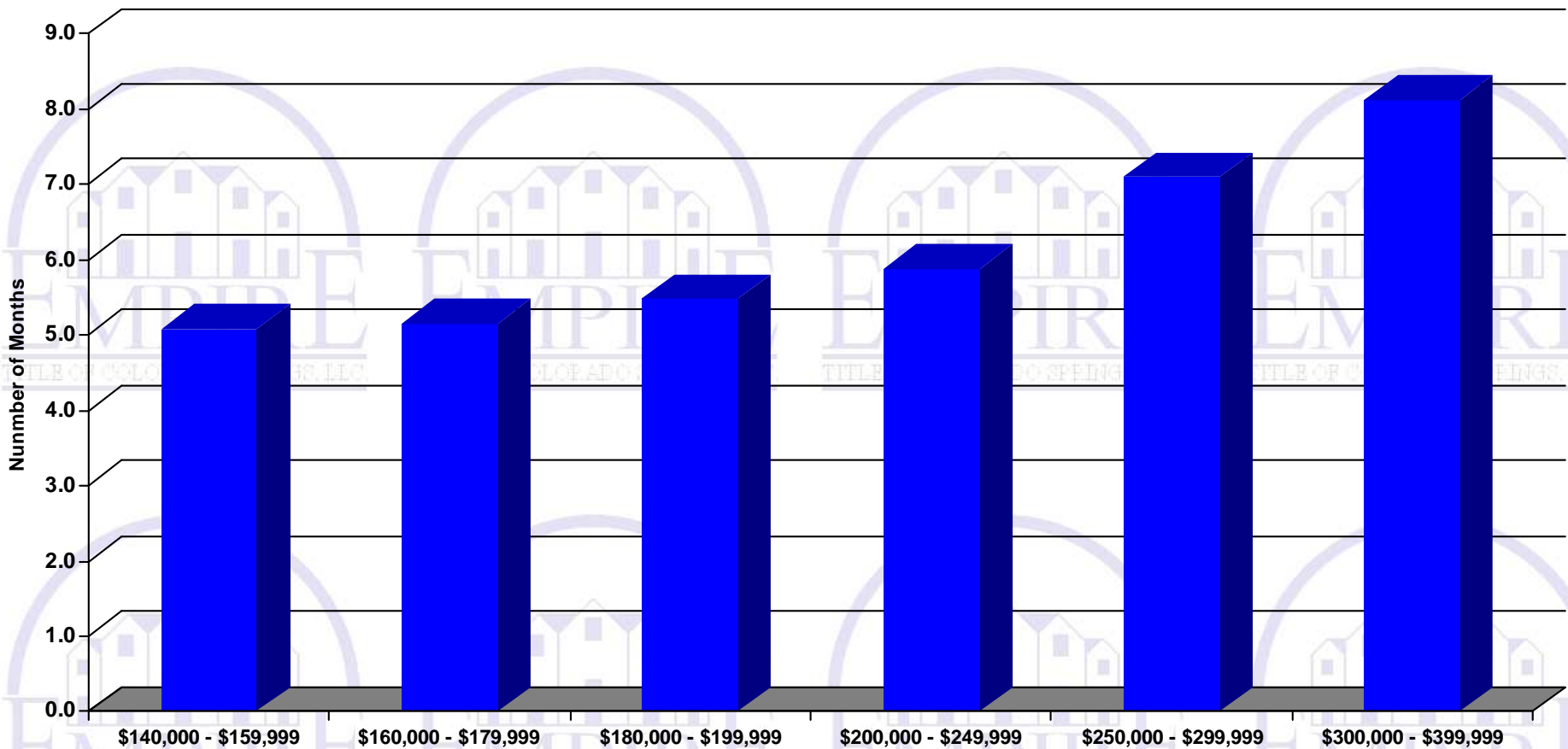
Sales as a % of Active Listing Previous 12 Month Average



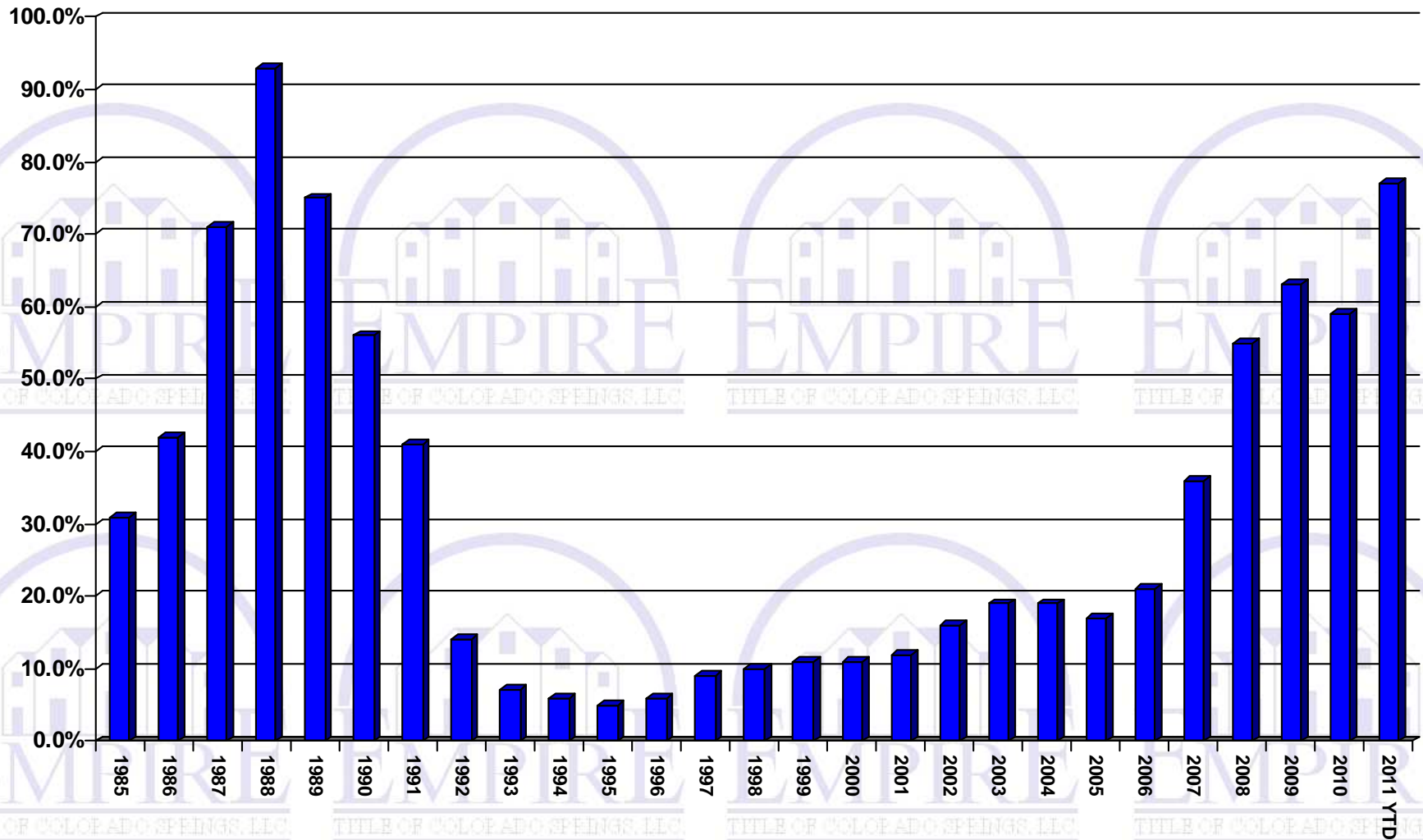
Inventory in Number of Months



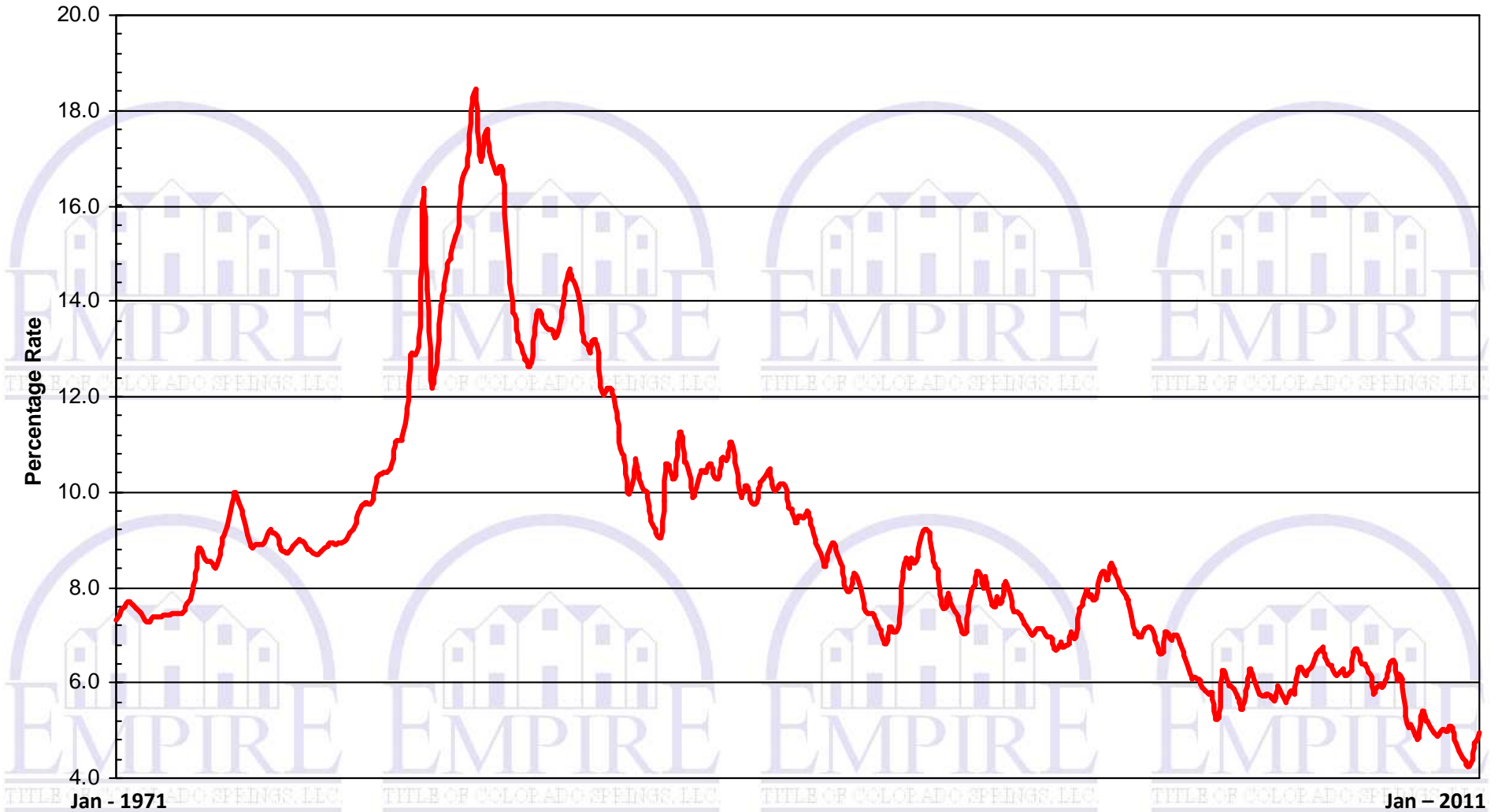
Months of Inventory February 2011



Foreclosures as a Percent of Sales

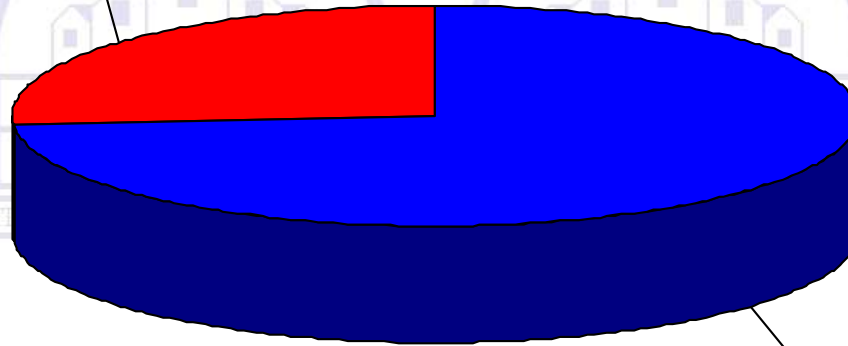


Freddie Mac 30 Fixed Rate Mortgage



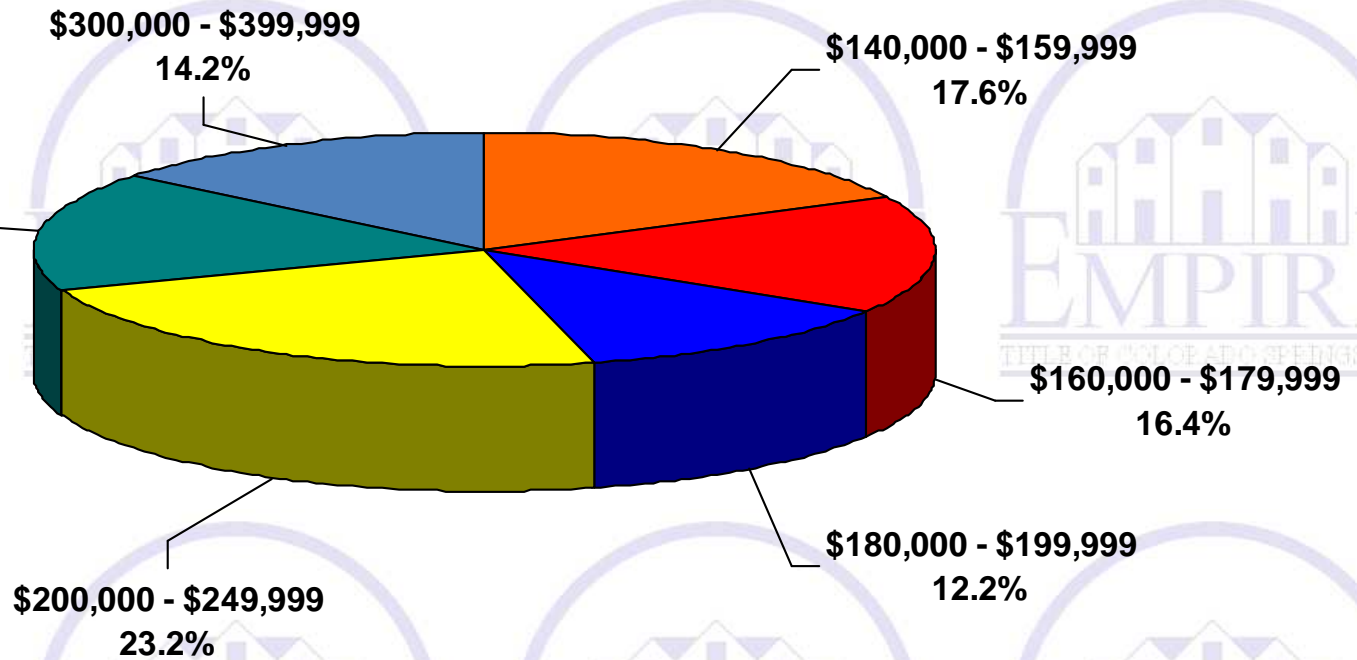
Percent of Sales by Price Year to Date 2011

\$250,000 and Greater
26.4%



\$249,000 or Less
73.6%

Percent of Sales from \$140,000 - \$399,999 Year to Date 2011



2011 YTD vs. 2010 YTD

- Average Price  6.7%
- Median Price  2.8%
- Residential Units Sold  12.4%
- Inventory Levels  11.3%
- Number of Listings  1.9%
- Foreclosures  5.7%
- Interest Rates are at historic lows